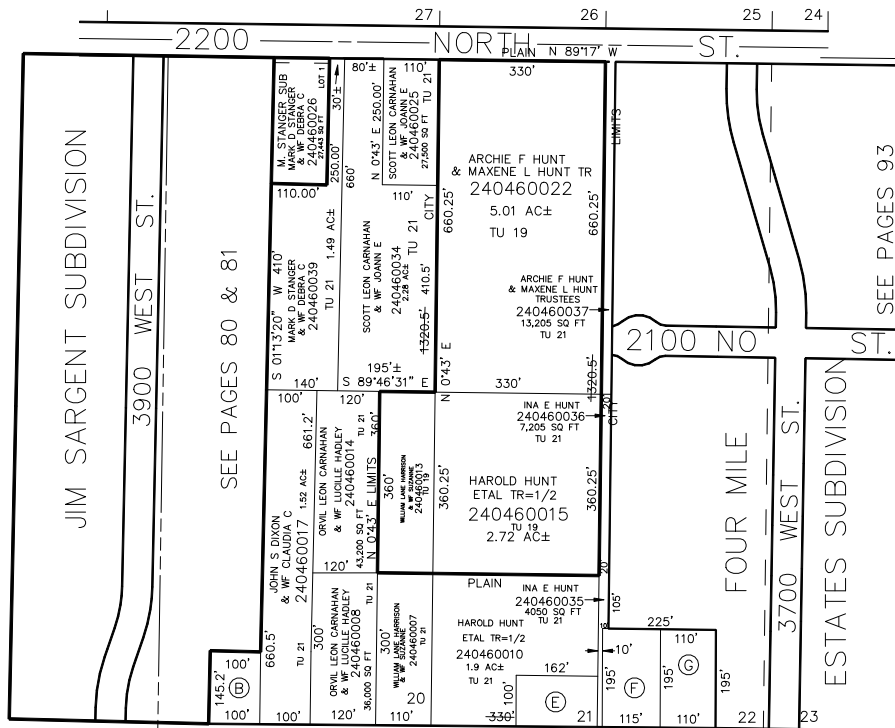


PLAIN CITY
LOTS 1, 2 & 20 TO 23, PLAT B

TAXING UNIT: 19, 21,339

SCALE 1" = 200'

SEE PAGE 50



SEE PAGE 47

SEE BOOK 19
PAGE 35

(A) MIKE LANDRUM
240460024
28,398 SQ FT
TU 21

(B) KURT R NIELSON & WF
240460023
14,520 SQ FT
TU 21

(C) HAROLD HUNT
ETAL TR=1/2
240460009
TU 21

(D) JOHN CAMPBELL
& WF LILLIAN
240460016
22,425 SQ FT
TU 21

(E) JALENE SMITH
240460021
21,450 SQ FT
TU 21

BEARINGS & DISTANCES FOR SECTION LINES, DETERMINED BY STATE PLANE COORDINATES RECEIVED FROM OFFICE OF WEBER COUNTY SURVEYOR.

SEE ORIGINAL DEDICATION PLAT OF PLAIN CITY IN BOOK 5, PAGE 80 OF RECORDS.

68.44 RDS = 1129.26'

SEE BOOK 15
PAGE 10